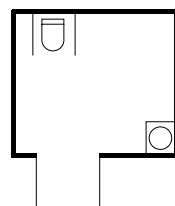
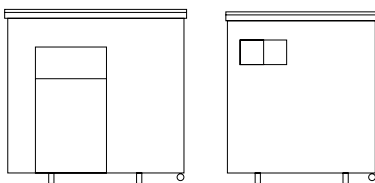


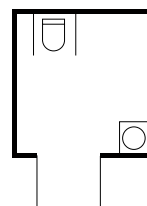
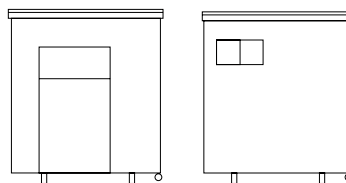


- **2300 C:** afm. 230 (l) x 190 (b) x 285 (h)
- **2300 D:** afm. 190 (l) x 190 (b) x 285 (h)
- electra: 230 V 16 Amp.
- wateraansluiting: 3/4"
- afvoer: Ø 110 mm
- **2300 C:** 1 MIVA toilet. 1 wastafel incl. handdroger en zeepdispenser
- **2300 D:** 1 MIVA toilet. 1 wastafel incl. handdroger en zeepdispenser
- optimaal gebruiksgemak voor rolstoelgebruikers
- middels een heftruck overal te plaatsen
- optioneel: kachel, tent aansluiting

- **2300 C:** dimensions 230 (l) x 190 (w) x 285 (h)
- **2300 D:** dimensions 190 (l) x 190 (w) x 285 (h)
- electricity: 230 V 16 Amp.
- waterconnection: 3/4"
- sewage: Ø 110 mm
- **2300 C:** 1 disabled persons toilet. 1 handwashbasin incl. handdryer and soapdispenser
- **2300 D:** 1 disabled persons toilet. 1 handwashbasin incl. handdryer and soapdispenser
- optimal wheelchair accesible
- easily positioned by for-lift truck
- optional: heater, tent connection material



2300 C



2300 D

