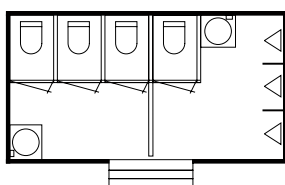
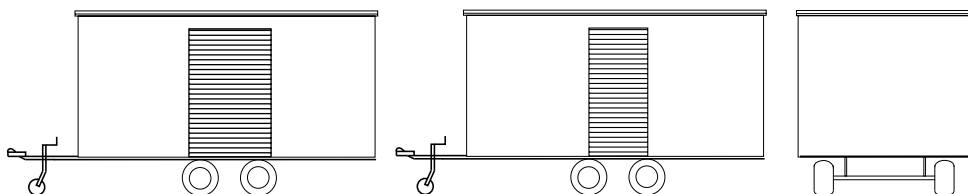
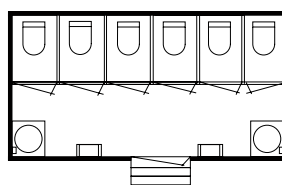




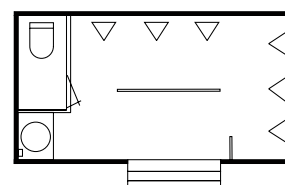
- afm. 500 (l) x 220 (b) x 290 (h)
- ingang d.m.v. stalen trapje
- electra: 230 V 16 Amp.
- wateraansluiting: 3/4"
- afvoer: Ø 110 mm
- **1700 A:** D: 3 toiletten, H: 1 toilet, 3 urinoirs. 2 wastafels incl. handdroger en zeepdispenser, gescheiden dames/herengedeelte
- **1700 B:** 6 toiletten. 2 wastafels incl. handdroger en zeepdispenser
- **1700 C:** 1 toilet, 6 urinoirs. 1 wastafel incl. handdroger en zeepdispenser
- optioneel: kachel, septic tank, tent aansluiting
- dimensions 500 (l) x 220 (w) x 290 (h)
- entrance by steel steps
- electricity: 230 V 16 Amp.
- waterconnection: 3/4"
- sewage: Ø 110 mm
- **1700 A:** 4 toilets, 3 urinals, 2 handwashbasins incl. handdryers and soapdispensers, separated men's/ladies
- **1700 B:** 6 toilets, 2 handwashbasins incl. handdryers and soapdispensers
- **1700 C:** 1 toilet, 6 urinals, 1 handwashbasin incl. handdryers and soapdispenser
- optional: heater, septic tank, tent connection material



1700 A



1700 B



1700 C

